

April 2015

[View this email in your browser](#)

The CHS exhibit will be closed April 4th through the 16th for installation of our new exhibit.

Join Us for our Exhibit Opening:

Reaching for the Sky:
The History of Columbus Aviation

April 16, 2015

Exhibit hours 6-9pm

Lecture 7-8pm In the WOSU@COSI Studio

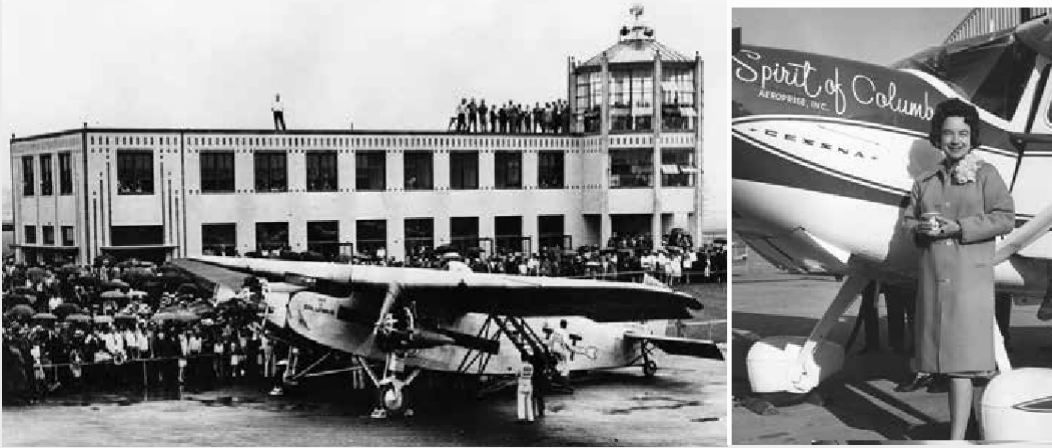


**REACHING
FOR THE SKY:**

THE HISTORY OF COLUMBUS AVIATION

Reaching back to the beginning of controlled flight, Columbus has played a significant role in aviation history. From the early days of Roy Knabenshue, Cromwell Dixon, and Driving Park to the national prominence of Eddie Rickenbacker, Transcontinental Air Transport, and Curtiss-Wright, and featuring colorful personalities like Foster Lane, Curtiss LeMay, and Jerrie Mock, Central Ohio has a proud tradition of reaching for the sky.

Be among the first to see CHS' newest exhibit highlighting Columbus' contributions to the history of aviation. Lecture by local historian, author, and exhibit curator Dick Barrett.




With Support from:



For more information and to make your reservation
please visit our website-

[Here](#)

Discover with  US



City Tour Series

Discover the past, the present, and what's in store for the future of our great city. Join the Columbus Historical Society on our 2015 Columbus City Tour Series.

Travel through Downtown with its historical centerpiece, the Ohio Statehouse, and the new Columbus Commons; the Short North Arts District; German Village, the Arena District; Olde Towne East; the Discovery District; Franklin Park and much more. Listen to stories of national significance, international intrigue and local history and lore.

You will discover over 200 years of Columbus history in its landmarks, the growth of its many cultural venues and visions for the future on this 2.5 hour tour.

Cost: \$30 per person, \$28 for senior citizens, \$25 for members of the Columbus Historical Society (unlimited ticket purchases for members). Registration and payment in advance are required.

Tour dates: 4th Saturday – May through October

Make your reservation [here](#).

There are many ways to support CHS.

Through the Kroger Community Rewards program, and AmazonSmile, CHS receives a percentage from purchases. We also participate in Community Shares of Mid Ohio.

To enroll in Kroger Community Rewards go to www.kroger.com/communityrewards and register your Kroger Rewards card. If you have enrolled in the Kroger Community Rewards program before it is time to re-enroll.

To enroll in Amazon Smile log into your Amazon account and go to <https://smile.amazon.com> and select the Columbus Historical Society

To find out more about Community Shares and how to sign up go to www.communityshares.net/

CHS is lucky to have a number of hard working and enthusiastic volunteers, interns, and work study students working with us. Each month we would like to introduce you to one of them.

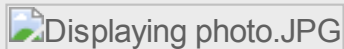
This month meet Rachel-



Hello, I'm Rachel Burns-Watson and I'm a work study student at the Columbus Historical Society through Columbus State. I'm an anthropology major and I hope to go into museum work professionally. I've been working here for about 8 months now and in that time I have gained a lot of knowledge and experience about working with historical artifacts. I've learned a lot about how to catalog artifacts and the amount of work that goes on behind the scenes in the collections. I think that working with the donations we receive is fascinating because it helps to give faces and stories to the people who lived in Columbus before me.

If you are interested in volunteering with us please send us an email [here](#)

CHS maintains a large collection of artifacts, books, photos and other items. Each month we'd like to share some of the more interesting items in our collection.



In the spirit of our new Aviation exhibit, here is stereoscope and card commemorating the start of the Transcontinental Air Transport (TAT). The image features the plane that would be part of the first 48 hour transcontinental trips on July 8 1929. Carrying 20 passengers who came into Columbus by train from New York the plane took 11 hours to fly 938 miles to Waynoka Oklahoma.. The passengers would then take a train to Clovis New Mexico and then another plane the rest of the way to Los Angles.

If you are interested in donating items to CHS please email us [here](#)

CHS is seeking your support to help strengthen and sustain the organization long-term so that our collective memory is preserved and our history is shared with all future generations. Without additional investment, the preservation, promotion and presentation of Columbus' history cannot be ensured.

For more information or to donate please visit our [web site](#)

...

For volunteer and job opportunities please visit our website at:
www.columbushistory.org



Facebook



Twitter



Website

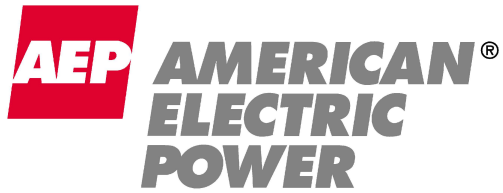


Email



Instagram

With support from



Copyright © 2015 Columbus Historical Society, All rights reserved.

[unsubscribe from this list](#) [update subscription preferences](#)

MailChimp